

Bid Date -

**\*\* ESTIMATING BAR LIST \*\***

LINE	LA	EP	A/D	STRUCTURE	MULT	REQ	CODE	+	X	QTY	SZ/GR	LENGTH	B	COMMENT	LINE LB
1				CONCRETE											
2															
3				REAL STREET APARTMENTS											
4				-											
5															
6				ARCHITECT: -											
7				PHONE :-											
8				FAX :-											
9															
10				STRUCTURE: -											
11				PHONE :-											
12				FAX :-											
13															
14				REBAR:											
15				1.ALL REINFORCING BARS SHALL BE DEFORMED											
16				ASTM 615 GRADE 60											
17				2.DOMESTIC OR NON-DOMESTIC REBARS											
18															
19				ADDENDUMS: NONE											
20															
21				DRAWING USED FOR ESTIMATE:											
22				1.01 OF 38 TO 38 OF 38 DATED ON (06/06/23)											
23				2.AE111.1 TO AE712 DATED ON (06/16/23)											
24				3.AG011 TO AS110 DATED ON (06/16/23)											
25				4.L1.00 TO L5.04 DATED ON (06/16/23)											
26				5.S001 TO S800 DATED ON (06/16/23)											
27															
28				EXCLUSIONS:											
29				1.REBAR WELDED TO STRUCTURAL STEEL											
30				2.ALL SMOOTH DWL											
31				3.CMU WALL (NOT IN SCOPE)											



**OR S**



Bid Date -

\*\* ESTIMATING BAR LIST \*\*

LINE	LA	EP	A/D	STRUCTURE	MULT	REQ	CODE	+	X	QTY	SZ/GR	LENGTH	B	COMMENT	LINE LB
63	8.WE ASSUMED CURB & GUTTER LENGTH AS 1400 LFT														
64															
65	NOTES:														
66	1.REBAR ACCESSORIES: AS PER STANDARD PRACTICE														
67															
68	DRILLED PIER							DRILLED PIER							
69	MARK = P1 (DIA =3'-0")														
70	REF. SHEET (9/S300 & S100)(H =62'-1")(2-LOC)														
71									2	6	#9	67-01		6-#9 VERT	2737
72									2	8	#8	8-02		8-#8 COLUMN DWL	349
73									2	44	#4	11-06	L	#4 @18" TIES	676
74									2	3	#4	11-06	L	3-#4 TIES @TOP	46
75	MARK = P1 (DIA =3'-0")														
76	REF. SHEET (9/S300 & S100)(H =67'-6")(17-LOC)														
77									17	6	#9	72-06		6-#9 VERT	25143
78									17	8	#8	8-02		8-#8 COLUMN DWL	2965
79									17	46	#4	11-06	L	#4 @18" TIES	6007
80									17	3	#4	11-06	L	3-#4 TIES @TOP	392
81	MARK = P1 (DIA =3'-0")														
82	REF. SHEET (9/S300 & S100)(H =69'-2")(13-LOC)														
83									13	6	#9	74-02		6-#9 VERT	19669
84									13	8	#8	8-02		8-#8 COLUMN DWL	2268
85									13	48	#4	11-06	L	#4 @18" TIES	4794
86									13	3	#4	11-06	L	3-#4 TIES @TOP	300
87	MARK = P1 (DIA =3'-0")														
88	REF. SHEET (9/S300 & S100)(H =68'-1")(17-LOC)														
89									17	6	#9	73-01		6-#9 VERT	25345
90									17	8	#8	8-02		8-#8 COLUMN DWL	2965
91									17	46	#4	11-06	L	#4 @18" TIES	6007
92									17	3	#4	11-06	L	3-#4 TIES @TOP	392
93	MARK = P1 (DIA =3'-0")														

Bid Date -

## \*\* ESTIMATING BAR LIST \*\*

LINE	LA	EP	A/D	STRUCTURE	MULT	REQ	CODE	+	X	QTY	SZ/GR	LENGTH	B	COMMENT	LINE LB
94 REF. SHEET (9/S300 & S100)(H =70'-1")(8-LOC)															
95									8	6	#9	75-01		6-#9 VERT	12254
96									8	8	#8	8-02		8-#8 COLUMN DWL	1396
97									8	48	#4	11-06	L	#4 @18" TIES	2950
98									8	3	#4	11-06	L	3-#4 TIES @TOP	184
99 MARK = P1 (DIA =3'-0")															
100 REF. SHEET (9/S300 & S100)(H =65'-3")(32-LOC)															
101									32	6	#9	67-03		6-#9 VERT	43901
102									32	8	#8	8-02		8-#8 COLUMN DWL	5582
103									32	45	#4	11-06	L	#4 @18" TIES	11062
104									32	3	#4	11-06	L	3-#4 TIES @TOP	737
105 MARK = P1 (DIA =3'-0")															
106 REF. SHEET (9/S300 & S100)(H =65'-3")(8-LOC)															
107									8	6	#9	72-03		6-#9 VERT	11791
108									8	8	#8	8-02		8-#8 COLUMN DWL	1396
109									8	46	#4	11-06	L	#4 @18" TIES	2827
110									8	3	#4	11-06	L	3-#4 TIES @TOP	184
111 MARK = P1 (DIA =3'-0")															
112 REF. SHEET (9/S300 & S100)(H =65'-0")(2-LOC)															
113									2	6	#9	72-00		6-#9 VERT	2938
114									2	8	#8	8-02		8-#8 COLUMN DWL	349
115									2	45	#4	11-06	L	#4 @18" TIES	691
116									2	3	#4	11-06	L	3-#4 TIES @TOP	46
117 MARK = P1 (DIA =3'-0")															
118 REF. SHEET (9/S300 & S100)(H =62'-9")(1-LOC)															
119										6	#9	67-09		6-#9 VERT	1382
120										8	#8	8-02		8-#8 COLUMN DWL	174
121										46	#4	11-06	L	#4 @18" TIES	353
122										3	#4	11-06	L	3-#4 TIES @TOP	23
123 MARK = P1 (DIA =3'-0")															
124 REF. SHEET (9/S300 & S100)(H =71'-3")(5-LOC)															

Bid Date -

## \*\* ESTIMATING BAR LIST \*\*

LINE	LA	EP	A/D	STRUCTURE	MULT	REQ	CODE	+	X	QTY	SZ/GR	LENGTH	B	COMMENT	LINE LB
125									5	6	#9	76-03		6-#9 VERT	7777
126									5	8	#8	8-02		8-#8 COLUMN DWL	872
127									5	50	#4	11-06	L	#4 @18" TIES	1921
128									5	3	#4	11-06	L	3-#4 TIES @TOP	115
129 MARK = P1 (DIA =3'-0")															
130 REF. SHEET (9/S300 & S100)(H =71'-11")(1-LOC)															
131										6	#9	76-11		6-#9 VERT	1569
132										8	#8	8-02		8-#8 COLUMN DWL	174
133										50	#4	11-06	L	#4 @18" TIES	384
134										3	#4	11-06	L	3-#4 TIES @TOP	23
135 MARK = P1 (DIA =3'-0")															
136 REF. SHEET (9/S300 & S100)(H =89'-9")(5-LOC)															
137									5	6	#9	94-09		6-#9 VERT	9664
138									5	8	#8	8-02		8-#8 COLUMN DWL	872
139									5	62	#4	11-06	L	#4 @18" TIES	2381
140									5	3	#4	11-06	L	3-#4 TIES @TOP	115
141 MARK = P1 (DIA =3'-0")															
142 REF. SHEET (9/S300 & S100)(H =87'-9")(7-LOC)															
143									7	6	#9	92-09		6-#9 VERT	13245
144									7	8	#8	8-02		8-#8 COLUMN DWL	1221
145									7	60	#4	11-06	L	#4 @18" TIES	3226
146									7	3	#4	11-06	L	3-#4 TIES @TOP	161
147 MARK = P1 (DIA =3'-0")															
148 REF. SHEET (9/S300 & S100)(H =83'-7")(4-LOC)															
149									4	6	#9	88-07		6-#9 VERT	7228
150									4	8	#8	8-02		8-#8 COLUMN DWL	698
151									4	58	#4	11-06	L	#4 @18" TIES	1782
152									4	3	#4	11-06	L	3-#4 TIES @TOP	92
153 MARK = P1 (DIA =3'-0")															
154 REF. SHEET (9/S300 & S100)(H =85'-7")(1-LOC)															
155										6	#9	90-07		6-#9 VERT	1848



Bid Date -

**\*\* ESTIMATING BAR LIST \*\***

LINE	LA	EP	A/D	STRUCTURE	MULT	REQ	CODE	+	X	QTY	SZ/GR	LENGTH	B	COMMENT	LINE LB
156										8	#8	8-02		8-#8 COLUMN DWL	174
157										59	#4	11-06	L	#4 @18" TIES	453
158										3	#4	11-06	L	3-#4 TIES @TOP	23
159 MARK = P1 (DIA =3'-0")															
160 REF. SHEET (9/S300 & S100)(H =85'-7")(1-LOC)															
161										6	#9	81-04		6-#9 VERT	1659
162										8	#8	8-02		8-#8 COLUMN DWL	174
163										52	#4	11-06	L	#4 @18" TIES	399
164										3	#4	11-06	L	3-#4 TIES @TOP	23
165 MARK = P1 (DIA =3'-0")															
166 REF. SHEET (9/S300 & S100)(H =78'-3")(3-LOC)															
167									3	6	#9	78-08		6-#9 VERT	4814
168									3	8	#8	8-02		8-#8 COLUMN DWL	523
169									3	52	#4	11-06	L	#4 @18" TIES	1198
170									3	3	#4	11-06	L	3-#4 TIES @TOP	69
171															
172 CONC. COLUMN CONCRETE COLUMN															
173 REF.SHEET = S101,S200,S201 & 14/S402															
174 MARK = A-1 (1 LOC.) (H = 31'-0")															
175										8	#8	37-09	H	8-#8 VERT	806
176										27	#3	7-04	L	#3 @14" TIES	74
177										27	#3	3-02	L	#3 @14" LINKS	32
178										27	#3	1-10	L	#3 @14" LINKS	19
179										8	#8	5-01	H	8-#8 DWL	109
180 MARK = A-1(-12'), A(12')-1, A(12')-1(-12')															
181 (3 LOC.) (H = 33'-6")															
182									3	8	#8	40-03	H	8-#8 VERT	2579
183									3	29	#3	6-04	L	#3 @14" TIES	207
184									3	29	#3	2-08	L	#3 @14" LINKS	87
185									3	29	#3	1-10	L	#3 @14" LINKS	60
186									3	8	#8	5-01	H	8-#8 DWL	326

Bid Date -

\*\* ESTIMATING BAR LIST \*\*

LINE	LA	EP	A/D	STRUCTURE	MULT	REQ	CODE	+	X	QTY	SZ/GR	LENGTH	B	COMMENT	LINE LB
187	MARK = A(3')-1(9'), A(14')-1(-19'), A(16')-1(9'),														
188	A(16')-1(-4'), A(-7')-1(-6'), A(-8')-1(-19'),														
189	A(3')-2(-7'), A(14')-2(6'), A-3(-2'), A(14')-4,														
190	A(-10')-4,A(17')-6(5'),A(-8')-6(5'),A(16')-9(-6'),														
191	A(-10')-9(-9'),A-10(1'),A(17')-10(1'),														
192	A(14')-12(-6'),A(-6')-12(-6'),A(3')-14,														
193	A(16')-14(-10'), A(-6')-14(-10'), A(3')-15(14'),														
194	A(26')-15(17'), A(27')-15(4'), B(-1')-1(15'),														
195	B-3(-10'), B(3')-4(3'), B(3')-6(3'), B(-1')-7(2'),														
196	B-9, B-11(-2'), B(1')-12(3'), C(2')-2, C-3(-9'),														
197	C(2')-4(3'), C-6(3'), C-7(2'), C(2')-9,C-11(-3'),														
198	C(4')-11(4'),C(-5')-11(9'),C(-4')-13(-1'),														
199	C(4')-15(16'),D(5')-1(16'),D(-3')-12(-7'),														
200	D(-3')-13(6'),D-14(-3'),D-15(19')(49 LOC.)														
201									49	8	#8	5-01	H	8-#8 DWL	5320
202									49	8	#8	10-10	H	8-#8 VERT	11339
203									49	10	#3	6-04	L	#3 @14" TIES	1167
204									49	10	#3	2-08	L	#3 @14" LINKS	491
205									49	10	#3	1-10	L	#3 @14" LINKS	338
206									49	8	#8	5-01	H	8-#8 DWL	5320
207	MARK = A-2, B-2, D-2 (3 LOC.) (H = 31'-0")														
208									3	8	#8	37-09	H	8-#8 VERT	2419
209									3	27	#3	7-04	L	#3 @14" TIES	223
210									3	27	#3	3-02	L	#3 @14" LINKS	96
211									3	27	#3	1-10	L	#3 @14" LINKS	56
212									3	8	#8	5-01	H	8-#8 DWL	326
213	MARK = A-2(10'), B-2(10') (2 LOC.) (H = 31'-4")														
214									2	8	#8	37-09	H	8-#8 VERT	1613
215									2	27	#3	7-04	L	#3 @14" TIES	149
216									2	27	#3	3-02	L	#3 @14" LINKS	64
217									2	27	#3	1-10	L	#3 @14" LINKS	37

Bid Date -

## \*\* ESTIMATING BAR LIST \*\*

LINE	LA	EP	A/D	STRUCTURE	MULT	REQ	CODE	+	X	QTY	SZ/GR	LENGTH	B	COMMENT	LINE LB
218									2	8	#8	5-01	H	8-#8 DWL	217
219 MARK = A(12')-2 (1 LOC.) (H = 33'-6")															
220										8	#8	40-03	H	8-#8 VERT	860
221										33	#3	6-04	L	#3 @14" TIES	79
222										33	#3	2-08	L	#3 @14" LINKS	33
223										33	#3	1-10	L	#3 @14" LINKS	23
224										8	#8	5-01	H	8-#8 DWL	109
225 MARK = A(12')-2(10') (1 LOC.) (H = 33'-10")															
226										8	#8	40-03	H	8-#8 VERT	860
227										33	#3	6-04	L	#3 @14" TIES	79
228										33	#3	2-08	L	#3 @14" LINKS	33
229										33	#3	1-10	L	#3 @14" LINKS	23
230										8	#8	5-01	H	8-#8 DWL	109
231 MARK = A-4, A-6(3'), A-8(6'),A-10(-5'), A-12(-6'),															
232 A-14(-7'), B-4, B-6, B-8, B-9(3'), B-11, B-13															
233 (12 LOC.) (H = 31'-11")															
234									12	8	#8	38-08	H	8-#8 VERT	9911
235									12	27	#3	7-04	L	#3 @14" TIES	893
236									12	27	#3	3-02	L	#3 @14" LINKS	386
237									12	27	#3	1-10	L	#3 @14" LINKS	223
238									12	8	#8	5-01	H	8-#8 DWL	1303
239 MARK = A(12')-4, A(12')-6(3'), A(12')-8(6'),															
240 A(12')-10(-5'), A(12')-12(-6'), A(12')-14(-7')															
241 (6 LOC.) (H = 34'-05")															
242									6	8	#8	41-02	H	8-#8 VERT	5276
243									6	33	#3	6-04	L	#3 @14" TIES	472
244									6	33	#3	2-08	L	#3 @14" LINKS	199
245									6	33	#3	1-10	L	#3 @14" LINKS	136
246									6	8	#8	5-01	H	8-#8 DWL	651
247 MARK = A-15(16') (1 LOC.) (H = 34'-05")															
248										8	#8	38-08	H	8-#8 VERT	826



Bid Date -

## \*\* ESTIMATING BAR LIST \*\*

LINE	LA	EP	A/D	STRUCTURE	MULT	REQ	CODE	+	X	QTY	SZ/GR	LENGTH	B	COMMENT	LINE LB
249										33	#3	7-04	L	#3 @14" TIES	91
250										33	#3	3-02	L	#3 @14" LINKS	39
251										33	#3	1-10	L	#3 @14" LINKS	23
252										8	#8	5-01	H	8-#8 DWL	109
253 MARK = A(16')-15(16') (1 LOC.) (H = 34'-00")															
254										8	#8	40-09	H	8-#8 VERT	870
255										31	#3	6-04	L	#3 @14" TIES	74
256										31	#3	2-08	L	#3 @14" LINKS	31
257										31	#3	1-10	L	#3 @14" LINKS	21
258										8	#8	5-01	H	8-#8 DWL	109
259 MARK = B-1, C-6 (2 LOC.) (H = 33'-00")															
260									2	8	#8	39-09	H	8-#8 VERT	1698
261									2	29	#3	7-04	L	#3 @14" TIES	160
262									2	29	#3	3-02	L	#3 @14" LINKS	69
263									2	29	#3	1-10	L	#3 @14" LINKS	40
264									2	8	#8	5-01	H	8-#8 DWL	217
265 MARK = C-2(10'), C-4 (2 LOC.) (H = 31'-08")															
266									2	8	#8	38-05	H	8-#8 VERT	1641
267									2	29	#3	7-04	L	#3 @14" TIES	160
268									2	29	#3	3-02	L	#3 @14" LINKS	69
269									2	29	#3	1-10	L	#3 @14" LINKS	40
270									2	8	#8	6-05	H	8-#8 DWL	274
271 MARK = C-8 (1 LOC.) (H = 38'-04")															
272										8	#8	45-01	H	8-#8 VERT	963
273										35	#3	7-04	L	#3 @14" TIES	97
274										35	#3	3-02	L	#3 @14" LINKS	42
275										35	#3	1-10	L	#3 @14" LINKS	24
276										8	#8	5-01	H	8-#8 DWL	109
277 MARK = C-9(3') (1 LOC.) (H = 34'-00")															
278										8	#8	40-09	H	8-#8 VERT	870
279										31	#3	7-04	L	#3 @14" TIES	85

Bid Date -

## \*\* ESTIMATING BAR LIST \*\*

LINE	LA	EP	A/D	STRUCTURE	MULT	REQ	CODE	+	X	QTY	SZ/GR	LENGTH	B	COMMENT	LINE LB
280										31	#3	3-02	L	#3 @14" LINKS	37
281										31	#3	1-10	L	#3 @14" LINKS	21
282										8	#8	6-05	H	8-#8 DWL	137
283 MARK = C-11 (1 LOC.) (H = 34'-07")															
284										8	#8	40-09	H	8-#8 VERT	870
285										31	#3	7-04	L	#3 @14" TIES	85
286										31	#3	3-02	L	#3 @14" LINKS	37
287										31	#3	1-10	L	#3 @14" LINKS	21
288										8	#8	6-05	H	8-#8 DWL	137
289 MARK = C-13, D-13, D-15 (3 LOC.) (H = 33'-05")															
290										3	8 #8	40-02	H	8-#8 VERT	2574
291										3	31 #3	7-04	L	#3 @14" TIES	256
292										3	31 #3	3-02	L	#3 @14" LINKS	111
293										3	31 #3	1-10	L	#3 @14" LINKS	64
294										3	8 #8	5-01	H	8-#8 DWL	326
295 MARK = D-2(10') (1 LOC.) (H = 29'-02")															
296										8	#8	35-11	H	8-#8 VERT	767
297										25	#3	7-04	L	#3 @14" TIES	69
298										25	#3	3-02	L	#3 @14" LINKS	30
299										25	#3	1-10	L	#3 @14" LINKS	17
300										8	#8	6-05	H	8-#8 DWL	137
301 MARK = D-4 (1 LOC.) (H = 27'-10")															
302										8	#8	34-07	H	8-#8 VERT	739
303										25	#3	7-04	L	#3 @14" TIES	69
304										25	#3	3-02	L	#3 @14" LINKS	30
305										25	#3	1-10	L	#3 @14" LINKS	17
306										8	#8	6-05	H	8-#8 DWL	137
307 MARK = D-6 (1 LOC.) (H = 26'-06")															
308										8	#8	33-03	H	8-#8 VERT	710
309										23	#3	7-04	L	#3 @14" TIES	63
310										23	#3	3-02	L	#3 @14" LINKS	27

Bid Date -

## \*\* ESTIMATING BAR LIST \*\*

LINE	LA	EP	A/D	STRUCTURE	MULT	REQ	CODE	+	X	QTY	SZ/GR	LENGTH	B	COMMENT	LINE LB
311										23	#3	1-10	L	#3 @14" LINKS	16
312										8	#8	6-05	H	8-#8 DWL	137
313 MARK = D-8 (1 LOC.) (H = 34'-07")															
314										8	#8	41-04	H	8-#8 VERT	883
315										31	#3	7-04	L	#3 @14" TIES	85
316										31	#3	3-02	L	#3 @14" LINKS	37
317										31	#3	1-10	L	#3 @14" LINKS	21
318										8	#8	6-05	H	8-#8 DWL	137
319 MARK = D-9(3') (1 LOC.) (H = 33'-00")															
320										8	#8	39-09	H	8-#8 VERT	849
321										29	#3	7-04	L	#3 @14" TIES	80
322										29	#3	3-02	L	#3 @14" LINKS	35
323										29	#3	1-10	L	#3 @14" LINKS	20
324										8	#8	6-05	H	8-#8 DWL	137
325 MARK = D-11 (1 LOC.) (H = 32'-01")															
326										8	#8	38-10	H	8-#8 VERT	829
327										29	#3	7-04	L	#3 @14" TIES	80
328										29	#3	3-02	L	#3 @14" LINKS	35
329										29	#3	1-10	L	#3 @14" LINKS	20
330										8	#8	6-05	H	8-#8 DWL	137
331 MARK = D(-1')-15(16') (1 LOC.) (H = 33'-05")															
332										8	#8	40-02	H	8-#8 VERT	858
333										29	#3	7-04	L	#3 @14" TIES	80
334										29	#3	3-02	L	#3 @14" LINKS	35
335										29	#3	1-10	L	#3 @14" LINKS	20
336										8	#8	6-05	H	8-#8 DWL	137
337 MARK = G(1')-1, G(1')-1(-12')(2 LOC.) (H = 33'-6")															
338									2	8	#8	40-03	H	8-#8 VERT	1719
339									2	29	#3	6-04	L	#3 @14" TIES	138
340									2	29	#3	2-08	L	#3 @14" LINKS	58
341									2	29	#3	1-10	L	#3 @14" LINKS	40

Bid Date -

\*\* ESTIMATING BAR LIST \*\*

LINE	LA	EP	A/D	STRUCTURE	MULT	REQ	CODE	+	X	QTY	SZ/GR	LENGTH	B	COMMENT	LINE LB
342									2	8	#8	5-01	H	8-#8 DWL	217
343 MARK = G(-4')-1(-18'), G(-5')-1(-3'),G(1')-2(11'),															
344 G(-5')-2(-13'),G(-6')-2(9'), G(-6')-4,															
345 G(-6')-6(1'), G(-6')-8(2'), G(-9')-9(5'),															
346 G(1')-11(9'),G(-8')-12(-5'),G-13(-1'),															
347 G(3')-14(-2'),G(1')-15(19'),H-2(9'),H(-20')-2(10")															
348 H(-45')-2(7'),H(-14')-4, H(-26')-4(-1'),															
349 H(-45')-4(-2'), H(-26')-5(-5'),H(-48')-5(-5'),															
350 H(-12')-6(1'), H(-26')-6(2'), H(-48')-6(2'),															
351 H(-26')-7(1'), H(-48')-7(1'), H(-12')-8(2'),															
352 H(-14')-9(5'),H(-26')-9(1'), H(-48')-9(1'),															
353 H(8')-11(3'), H(-12')-11(3'),H(-12')-12(3'),															
354 H(-47')-12(-3'), H-13(-2'), H(3')-14(-3'),															
355 H(-13')-14(-3'), H(-26')-14(-4'), H(-47')-14(-4'),															
356 H(3')-15(18'), H(-13')-15(18'), H(-26')-15(8'),															
357 H(-26')-15(19'), H(-47')-15(19'), H(-50')-15(5')															
358 (46 LOC.)															
359									46	8	#8	5-01	H	8-#8 DWL	4995
360									46	8	#8	10-10	H	8-#8 VERT	10644
361									46	10	#3	6-04	L	#3 @14" TIES	1095
362									46	10	#3	2-08	L	#3 @14" LINKS	461
363									46	10	#3	1-08	L	#3 @14" LINKS	288
364									46	8	#8	5-01	H	8-#8 DWL	4995
365 MARK = G-2(10'), H-2(10') (2 LOC.) (H = 30'-6")															
366									2	8	#8	37-03	H	8-#8 VERT	1591
367									2	27	#3	7-04	L	#3 @14" TIES	149
368									2	27	#3	3-02	L	#3 @14" LINKS	64
369									2	27	#3	1-10	L	#3 @14" LINKS	37
370									2	8	#8	5-01	H	8-#8 DWL	217
371 MARK = G(1')-2 (1 LOC.) (H = 33'-7")															
372										8	#8	40-04	H	8-#8 VERT	862

Bid Date -

**\*\* ESTIMATING BAR LIST \*\***

LINE	LA	EP	A/D	STRUCTURE	MULT	REQ	CODE	+	X	QTY	SZ/GR	LENGTH	B	COMMENT	LINE LB
373										30	#3	7-04	L	#3 @14" TIES	83
374										30	#3	3-02	L	#3 @14" LINKS	36
375										30	#3	1-10	L	#3 @14" LINKS	21
376										8	#8	5-01	H	8-#8 DWL	109
377 MARK = G-3 (1 LOC.) (H = 28'-6")															
378										8	#8	35-03	H	8-#8 VERT	753
379										25	#3	7-04	L	#3 @14" TIES	69
380										25	#3	3-02	L	#3 @14" LINKS	30
381										25	#3	1-10	L	#3 @14" LINKS	17
382										8	#8	6-05	H	8-#8 DWL	137
383 MARK = G-5 (1 LOC.) (H = 27'-0")															
384										8	#8	33-09	H	8-#8 VERT	721
385										25	#3	7-04	L	#3 @14" TIES	69
386										25	#3	3-02	L	#3 @14" LINKS	30
387										25	#3	1-10	L	#3 @14" LINKS	17
388										8	#8	6-05	H	8-#8 DWL	137
389 MARK = G-7 (1 LOC.) (H = 34'-9")															
390										8	#8	41-06	H	8-#8 VERT	886
391										31	#3	7-04	L	#3 @14" TIES	85
392										31	#3	3-02	L	#3 @14" LINKS	37
393										31	#3	1-10	L	#3 @14" LINKS	21
394										8	#8	6-05	H	8-#8 DWL	137
395 MARK = G-9 (1 LOC.) (H = 33'-2")															
396										8	#8	39-11	H	8-#8 VERT	853
397										29	#3	7-04	L	#3 @14" TIES	80
398										29	#3	3-02	L	#3 @14" LINKS	35
399										29	#3	1-10	L	#3 @14" LINKS	20
400										8	#8	6-05	H	8-#8 DWL	137
401 MARK = G-11, G-12, H-12 (3 LOC.) (H = 32'-2")															
402									3	8	#8	38-11	H	8-#8 VERT	2494
403									3	29	#3	7-04	L	#3 @14" TIES	240



Bid Date -

## \*\* ESTIMATING BAR LIST \*\*

LINE	LA	EP	A/D	STRUCTURE	MULT	REQ	CODE	+	X	QTY	SZ/GR	LENGTH	B	COMMENT	LINE LB
404									3	29	#3	3-02	L	#3 @14" LINKS	104
405									3	29	#3	1-10	L	#3 @14" LINKS	60
406									3	8	#8	6-05	H	8-#8 DWL	411
407 MARK = G(1')-15, H-11 (2 LOC.) (H = 33'-6")															
408									2	8	#8	40-03	H	8-#8 VERT	1719
409									2	30	#3	7-04	L	#3 @14" TIES	165
410									2	30	#3	3-02	L	#3 @14" LINKS	71
411									2	30	#3	1-10	L	#3 @14" LINKS	41
412									2	8	#8	5-01	H	8-#8 DWL	217
413 MARK = G(1')-15(12'), H-14 (2 LOC.) (H = 35'-11")															
414									2	8	#8	42-08	H	8-#8 VERT	1823
415									2	30	#3	7-04	L	#3 @14" TIES	165
416									2	30	#3	3-02	L	#3 @14" LINKS	71
417									2	30	#3	1-10	L	#3 @14" LINKS	41
418									2	8	#8	5-01	H	8-#8 DWL	217
419 MARK = H(-12')-2(10')(1 LOC.) (H = 33'-0")															
420										8	#8	39-09	H	8-#8 VERT	849
421										29	#3	6-04	L	#3 @14" TIES	69
422										29	#3	2-08	L	#3 @14" LINKS	29
423										29	#3	1-10	L	#3 @14" LINKS	20
424										8	#8	5-01	H	8-#8 DWL	109
425 MARK = H(-22')-2(9'), H(-45')-2(9'), H(-45')-3(4')															
426 H(-45')-5(-4'),H(-45')-6(6'), H(-45')-8(1'),															
427 H(-45')-9(-1') (7 LOC.) (H = 13'-6")															
428									7	8	#8	5-01	H	8-#8 DWL	760
429									7	8	#8	13-06	H	8-#8 VERT	2019
430									7	15	#3	6-04	L	#3 @14" TIES	250
431									7	15	#3	2-08	L	#3 @14" LINKS	105
432									7	15	#3	1-10	L	#3 @14" LINKS	72
433									7	8	#8	5-01	H	8-#8 DWL	760
434 MARK = H-3 (1 LOC.) (H = 29'-10")															

Bid Date -

\*\* ESTIMATING BAR LIST \*\*

LINE	LA	EP	A/D	STRUCTURE	MULT	REQ	CODE	+	X	QTY	SZ/GR	LENGTH	B	COMMENT	LINE LB
435										8	#8	36-07	H	8-#8 VERT	781
436										27	#3	7-04	L	#3 @14" TIES	74
437										27	#3	3-02	L	#3 @14" LINKS	32
438										27	#3	1-10	L	#3 @14" LINKS	19
439										8	#8	5-01	H	8-#8 DWL	109
440 MARK = H(-12')-3 (1 LOC.) (H = 32'-4")															
441										8	#8	39-01	H	8-#8 VERT	835
442										29	#3	6-04	L	#3 @14" TIES	69
443										29	#3	2-08	L	#3 @14" LINKS	29
444										29	#3	1-10	L	#3 @14" LINKS	20
445										8	#8	5-01	H	8-#8 DWL	109
446 MARK = H(-23')-3(4'), H(-23')-5(-4'),H(-23')-6(6')															
447 H(-23')-8(1'),H(-23')-9(-1')(5 LOC.)(H = 10'-10")															
448									5	8	#8	5-01	H	8-#8 DWL	543
449									5	8	#8	10-10	H	8-#8 VERT	1157
450									5	10	#3	7-04	L	#3 @14" TIES	138
451									5	10	#3	1-08	L	#3 @14" LINKS	31
452									5	10	#3	3-02	L	#3 @14" LINKS	60
453									5	8	#8	5-01	H	8-#8 DWL	543
454 MARK = H-5 (1 LOC.) (H = 28'-4")															
455										8	#8	35-01	H	8-#8 VERT	749
456										25	#3	7-04	L	#3 @14" TIES	69
457										25	#3	3-02	L	#3 @14" LINKS	30
458										25	#3	1-10	L	#3 @14" LINKS	17
459										8	#8	5-01	H	8-#8 DWL	109
460 MARK = H(-12')-5 (1 LOC.) (H = 30'-10")															
461										8	#8	37-07	H	8-#8 VERT	803
462										27	#3	7-04	L	#3 @14" TIES	74
463										27	#3	3-02	L	#3 @14" LINKS	32
464										27	#3	1-10	L	#3 @14" LINKS	19
465										8	#8	5-01	H	8-#8 DWL	109

Bid Date -

\*\* ESTIMATING BAR LIST \*\*

LINE	LA	EP	A/D	STRUCTURE	MULT	REQ	CODE	+	X	QTY	SZ/GR	LENGTH	B	COMMENT	LINE LB
466 MARK = H-7 (1 LOC.) (H = 36'-1")															
467										8	#8	42-10	H	8-#8 VERT	915
468										33	#3	7-04	L	#3 @14" TIES	91
469										33	#3	3-02	L	#3 @14" LINKS	39
470										33	#3	1-10	L	#3 @14" LINKS	23
471										8	#8	5-01	H	8-#8 DWL	109
472 MARK = H(-12')-7 (1 LOC.) (H = 38'-7")															
473										8	#8	45-04	H	8-#8 VERT	968
474										35	#3	6-04	L	#3 @14" TIES	83
475										35	#3	2-08	L	#3 @14" LINKS	35
476										35	#3	1-10	L	#3 @14" LINKS	24
477										8	#8	5-01	H	8-#8 DWL	109
478 MARK = H-9 (1 LOC.) (H = 34'-6")															
479										8	#8	41-03	H	8-#8 VERT	881
480										33	#3	7-04	L	#3 @14" TIES	91
481										33	#3	3-02	L	#3 @14" LINKS	39
482										33	#3	1-10	L	#3 @14" LINKS	23
483										8	#8	5-01	H	8-#8 DWL	109
484 MARK = H(-12')-9 (1 LOC.) (H = 37'-0")															
485										8	#8	43-09	H	8-#8 VERT	934
486										33	#3	6-04	L	#3 @14" TIES	79
487										33	#3	2-08	L	#3 @14" LINKS	33
488										33	#3	1-10	L	#3 @14" LINKS	23
489										8	#8	5-01	H	8-#8 DWL	109
490 MARK = H(-12')-11,H(-12')-12 (2 LOC.) (H = 36'-0")															
491									2	8	#8	42-09	H	8-#8 VERT	1826
492									2	33	#3	6-04	L	#3 @14" TIES	157
493									2	33	#3	2-08	L	#3 @14" LINKS	66
494									2	33	#3	1-10	L	#3 @14" LINKS	45
495									2	8	#8	5-01	H	8-#8 DWL	217
496 MARK = H(-28')-12(-3'),H(-28')-14(-2')															

Bid Date -

\*\* ESTIMATING BAR LIST \*\*

LINE	LA	EP	A/D	STRUCTURE	MULT	REQ	CODE	+	X	QTY	SZ/GR	LENGTH	B	COMMENT	LINE LB
497 (2 LOC.)(H = 15'-3")															
498									2	8	#8	5-01	H	8-#8 DWL	217
499									2	8	#8	15-02	H	8-#8 VERT	648
500									2	15	#3	7-04	L	#3 @14" TIES	83
501									2	15	#3	1-08	L	#3 @14" LINKS	19
502									2	15	#3	3-02	L	#3 @14" LINKS	36
503									2	8	#8	5-01	H	8-#8 DWL	217
504 MARK = H(-46')-12(-3'), H(-46')-14(-2'),															
505 H(-28')-15(18'),H(-38')-15(18')															
506 (4 LOC.)(H = 17'-03")															
507									4	8	#8	5-01	H	8-#8 DWL	434
508									4	8	#8	15-02	H	8-#8 VERT	1296
509									4	15	#3	7-04	L	#3 @14" TIES	165
510									4	15	#3	1-08	L	#3 @14" LINKS	38
511									4	15	#3	3-02	L	#3 @14" LINKS	71
512									4	8	#8	5-01	H	8-#8 DWL	434
513															
514 MAT FOOTING MAT FOOTING															
515 REF. SHEET (15/S301 & S101)(660 SQ.FT)															
516									2	40	#7	40-00		#7 @12" EW T&B	6541
517										44	#4	7-08	L	#4 @48" STANDEE	225
518 REF. SHEET (5/S301 & S101)(170 SQ.FT)															
519									2	12	#7	40-00		#7 @12" EW T&B	1962
520										14	#4	7-08	L	#4 @48" STANDEE	72
521 REF. SHEET (5/S301 & S101)(420 SQ.FT)															
522									2	25	#7	40-00		#7 @12" EW T&B	4088
523										28	#4	7-08	L	#4 @48" STANDEE	143
524 REF. SHEET (15/S301 & S101)(520 SQ.FT)															
525									2	32	#7	40-00		#7 @12" EW T&B	5233
526										34	#4	7-08	L	#4 @48" STANDEE	174
527 CONCRETE WALL DWL															

Bid Date -

\*\* ESTIMATING BAR LIST \*\*

LINE	LA	EP	A/D	STRUCTURE	MULT	REQ	CODE	+	X	QTY	SZ/GR	LENGTH	B	COMMENT	LINE LB	
528 REF. SHEET (4/S301)																
529									2	212	#6	6-00	H	#6 @8" DWL EF	3821	
530										350	#5	5-06	H	#5 @8" DWL	2008	
531																
532				GRADE BEAM												GRADE BEAM
533 REF. SHEET (12/S301 & S101)(165 -LFT)																
534						5			2	6	#7	40-00		6-#7 CONT T&B	4906	
535										250	#7	14-00	H	#7 @8" STIRR	7154	
536 REF. SHEET (4/S301 & S101)(696 -LFT)																
537						20			2	4	#7	40-00		4-#7 CONT T&B	13082	
538									2	700	#7	5-06		#7 @12" TRANS T&B	15739	
539										355	#4	7-08	L	#4 @48" STANDEE	1818	
540						8			2	4	#7	6-00	H	4-#7 COR T&B	785	
541 REF. SHEET (13/S301 & S101)(107 -LFT)																
542						3			2	5	#7	40-00		5-#7 CONT T&B	2453	
543										110	#7	12-00	H	#7 @12" STIRR	2698	
544						3			2	5	#7	6-00	H	5-#7 COR T&B	368	
545 CONCRETE WALL DWL																
546 REF. SHEET (4/S301)																
547									2	1195	#6	6-00	H	#6 @8" DWL EF	21539	
548										355	#5	5-06	H	#5 @8" DWL	2036	
549																
550				CONC. WALL												CONCRETE WALL
551 FOUNDATION TO LEVEL 2 (12" THICK)																
552 REF. SHEET (4/S301 & A8/AE317)(584 -LFT)(H=VARIES)																
553									2	880	#6	36-01		#6 @8" VERT EF	95387	
554						17			2	55	#6	40-00		#6 @8" HOR EF	112350	
555									2	880	#6	5-00	H	#6 @8" DWL EF	13218	
556						10			2	55	#6	4-00	H	#6 @8" COR EF	6609	
557 FOUNDATION TO LEVEL 3 (" THICK)																
558 REF. SHEET (5/S301 & F1/AE324.)(65 -LFT)(H=VARIES)																



Bid Date -

## \*\* ESTIMATING BAR LIST \*\*

LINE	LA	EP	A/D	STRUCTURE	MULT	REQ	CODE	+	X	QTY	SZ/GR	LENGTH	B	COMMENT	LINE LB
559									2	100	#6	43-11		#6 @8" VERT EF	13193
560						2			2	68	#6	40-00		#6 @8" HOR EF	16342
561									2	100	#6	5-00	H	#6 @8" DWL EF	1502
562						4			2	68	#6	4-00	H	#6 @8" COR EF	3268
563 FOUNDATION TO LEVEL 1 (12" THICK)															
564 REF. SHEET (4/S301 & A8/AE317)(206 -LFT)(H=VARIES)															
565									2	312	#6	23-04		#6 @8" VERT EF	21869
566						7			2	36	#6	40-00		#6 @8" HOR EF	30280
567									2	312	#6	5-00	H	#6 @8" DWL EF	4686
568						6			2	36	#6	4-00	H	#6 @8" COR EF	2595
569 FOUNDATION TO LEVEL 3 (8" THICK)															
570 REF. SHEET (4/S301 & A8/AE317)(228 -LFT)(H=VARIES)															
571										345	#5	50-04		#5 @8" VERT	18112
572									7	13	#4	40-00		#4 @48" HOR	2432
573										345	#5	5-00	H	#5 @8" DWL	1799
574									14	13	#4	4-00	H	#4 @48" COR	486
575 FOUNDATION TO LEVEL 1.1 (8" THICK)															
576 REF. SHEET (4/S301 & A8/AE317)(36 -LFT)(H=VARIES)															
577										58	#5	13-08		#5 @8" VERT	827
578										4	#4	40-00		#4 @48" HOR	107
579										58	#5	5-00	H	#5 @8" DWL	302
580									2	4	#4	4-00	H	#4 @48" COR	21
581 LEVEL 1 TO LEVEL 2(8" THICK)															
582 REF. SHEET (4/S301 & A8/AE317)(78 -LFT)(H=VARIES)															
583										120	#5	16-02		#5 @8" VERT	2023
584										5	#4	40-00		#4 @48" HOR	134
585										120	#5	5-00	H	#5 @8" DWL	626
586									2	5	#4	4-00	H	#4 @48" COR	27
587 FOUNDATION TO LEVEL 1.1 (8" THICK)															
588 REF. SHEET(12/S301 & A8/AE317)(115 -LFT)(H=VARIES)															
589										180	#5	20-00		#5 @8" VERT	3755

Bid Date -

\*\* ESTIMATING BAR LIST \*\*

LINE	LA	EP	A/D	STRUCTURE	MULT	REQ	CODE	+	X	QTY	SZ/GR	LENGTH	B	COMMENT	LINE LB
590									3	5	#4	40-00		#4 @48" HOR	401
591										180	#5	5-00	H	#5 @8" DWL	939
592									2	5	#4	4-00	H	#4 @48" COR	27
593										80	#4	5-00	L	#4 @18" DWL	267
594 FOUNDATION TO LEVEL 1 (12" THICK)															
595 REF. SHEET (13/S301 & A8/AE317)(74 -LFT)(H=VARIES)															
596									2	113	#6	10-00		#6 @8" VERT EF	3395
597						2			2	16	#6	40-00		#6 @8" HOR EF	3845
598									2	113	#6	5-00	H	#6 @8" DWL EF	1697
599						6			2	16	#6	4-00	H	#6 @8" COR EF	1154
600 REF. SHEET (13/S301 & A8/AE317)(15 -LOC)															
601									15	4	#10	5-02	H	4-#10 DWL	1334
602									15	10	#5	8-00	H	#5 @3" TIES	1252
603 CMU WALL DWL															
604 REF. SHEET (13/S301)															
605										198	#4	4-00		#4 @16" CMU DWL	529
606										50	#4	4-00		#4 ADDL CMU DWL	134
607															
608 SOG SLAB ON GRADE															
609 FOUNDATION LEVEL															
610 REF. SHEET (1/S101)(30480 SQ.FT)															
611										1100	#4	40-00		#4 @18" EW	29392
612 REF. SHEET(13/S301)(74 -LFT)															
613						2			2	2	#5	40-00		2-#5 CONT	334
614									2	52	#4	4-00	L	#4 @18" DWL	278
615 ELEVATOR PIT WALL															
616 REF. SHEET(5/S301)(147 -LFT)															
617										150	#5	7-00	H	#5 @12" DWL	1095
618										150	#5	4-00		#5 @12" VERT	626
619									5	5	#4	40-00		#4 @12" HOR	668
620						4			4	5	#4	4-10	L	#4 @12" COR	258

Bid Date -

**\*\* ESTIMATING BAR LIST \*\***

LINE	LA	EP	A/D	STRUCTURE	MULT	REQ	CODE	+	X	QTY	SZ/GR	LENGTH	B	COMMENT	LINE LB	
621										115	#4	4-00	L	#4 @16" DWL	307	
622 LEVEL LL1																
623 REF. SHEET (1/S102)(110 SQ.FT)																
624										5	#4	40-00		#4 @18" EW	134	
625 LEVEL L1																
626 REF. SHEET (1/S103)(5440 SQ.FT)																
627										200	#4	40-00		#4 @18" EW	5344	
628 REF. SHEET(5/S301)(258 -LFT)																
629						8			2	3	#5	40-00		3-#5 T&B	2003	
630										260	#3	8-00	L	#3 @12" STIRR	782	
631						2			2	3	#5	6-00	H	3-#5 COR T&B	75	
632																
				UPPER LEVEL					UPPER LEVEL							
				>LEVEL-LL1					LEVEL-LL1 (S102)							
635 MILD REINFORCEMENT																
636 TOP BARS																
637									56	10	#5	12-00		10-#5 ADDL (1T)	7009	
638									3	10	#5	12-10	H	10-#5 ADDL (1T)	402	
639									18	15	#5	12-00		15-#5 ADDL (2T)	3379	
640									3	18	#5	12-00		18-#5 ADDL (3T)	676	
641									3	18	#5	20-00		18-#5 ADDL (4T)	1126	
642									4	12	#5	25-00		12-#5 ADDL (7T)	1252	
643										403	#5	7-10	H	#5 @24" ADDL (9T)	3293	
644										23	#5	8-08	H	#5 @24" ADDL (9T)	208	
645										113	#5	10-10	H	#5 @12" ADDL (10T)	1277	
646									41	9	#5	7-10	H	9-#5 ADDL (11T)	3015	
647									23	9	#5	7-00		9-#5 ADDL (11T)	1511	
648																
649 BOT BARS																
650										3	#5	14-00		3-#5 ADDL(1B)	44	
651										7	#5	16-00		7-#5 ADDL(2B)	117	

Bid Date -

\*\* ESTIMATING BAR LIST \*\*

LINE	LA	EP	A/D	STRUCTURE	MULT	REQ	CODE	+	X	QTY	SZ/GR	LENGTH	B	COMMENT	LINE LB
652															
653	TOP & BOT REINFORCEMENT (255 LFT)														
654					8				2	1	#5	40-00		1-#5 CONT T&B (1TB)	668
655															
656	10" THICK SLAB														
657	AREA = 26000 SQ.FT														
658									2	1440	#5	40-00		#5 @12" EW T&B	120154
659	12" THICK SLAB														
660	AREA = 4700 SQ.FT														
661									2	270	#5	40-00		#5 @12" EW T&B	22529
662										300	#4	5-08	L	#4 @48" STANDEE	1136
663	REF.SHEET = 1/S400 (26 LOC.)														
664									26	2	#5	4-00		2-#5 DIGONAL	217
665															
666				>LEVEL-L1										LEVEL-L1 (S103)	
667	MILD REINFORCEMENT														
668	TOP BARS														
669									52	10	#5	12-00		10-#5 ADDL (1T)	6508
670									3	10	#5	12-10	H	10-#5 ADDL (1T)	402
671									18	15	#5	12-00		15-#5 ADDL (2T)	3379
672									3	18	#5	12-00		18-#5 ADDL (3T)	676
673									3	18	#5	20-00		18-#5 ADDL (4T)	1126
674									3	12	#5	25-00		12-#5 ADDL (7T)	939
675										12	#5	25-10	H	12-#5 ADDL (7T)	323
676										403	#5	7-10	H	#5 @24" ADDL (9T)	3293
677										23	#5	8-08	H	#5 @24" ADDL (9T)	208
678										113	#5	10-10	H	#5 @12" ADDL (10T)	1277
679									40	9	#5	7-10	H	9-#5 ADDL (11T)	2941
680									16	9	#5	7-00		9-#5 ADDL (11T)	1051
681															
682	BOT BARS														

Bid Date -

\*\* ESTIMATING BAR LIST \*\*

LINE	LA	EP	A/D	STRUCTURE	MULT	REQ	CODE	+	X	QTY	SZ/GR	LENGTH	B	COMMENT	LINE LB
683										3	#5	14-00		3-#5 ADDL(1B)	44
684										7	#5	16-00		7-#5 ADDL(2B)	117
685															
686	TOP & BOT REINFORCEMENT (255 LFT)														
687					8				2	1	#5	40-00		1-#5 CONT T&B (1TB)	668
688															
689	10" THICK SLAB														
690	AREA = 24960 SQ.FT														
691									2	1385	#5	40-00		#5 @12" EW T&B	115564
692	12" THICK SLAB														
693	AREA = 4700 SQ.FT														
694									2	270	#5	40-00		#5 @12" EW T&B	22529
695										300	#4	5-08	L	#4 @48" STANDEE	1136
696															
697	4" CONC SLAB OVER STRUCT FOAM FILL														
698	AREA = 840 SQ.FT														
699										35	#4	40-00		#4 @18" EW	935
700															
701	REF.SHEET = 1/S400 (25 LOC.)														
702									25	2	#5	4-00		2-#5 DIGONAL	209
703															
704	>LEVEL-L2 LEVEL-L2 (S104)														
705	MILD REINFORCEMENT														
706	TOP BARS														
707									10	10	#5	12-00		10-#5 ADDL (1T)	1252
708									2	10	#5	12-10	H	10-#5 ADDL (1T)	268
709									71	15	#5	12-00		15-#5 ADDL (2T)	13330
710									21	15	#5	12-10	H	15-#5 ADDL (2T)	4216
711									35	18	#5	12-00		18-#5 ADDL (3T)	7885
712										18	#5	12-10	H	18-#5 ADDL (3T)	241
713										18	#5	20-00		18-#5 ADDL (4T)	375



Bid Date -

\*\* ESTIMATING BAR LIST \*\*

LINE	LA	EP	A/D	STRUCTURE	MULT	REQ	CODE	+	X	QTY	SZ/GR	LENGTH	B	COMMENT	LINE LB
714										18	#5	2-10	H	18-#5 ADDL (4T)	53
715										10	#5	7-10	H	10-#5 ADDL (5T)	82
716									2	7	#5	16-00		7-#5 ADDL (6T)	234
717									2	7	#5	16-10	H	7-#5 ADDL (6T)	246
718										235	#5	10-10	H	#5 @12" ADDL (10T)	2655
719									4	10	#5	15-00		10-#5 ADDL (12T)	626
720										10	#5	15-10	H	10-#5 ADDL (12T)	165
721										5	#5	20-10	H	5-#5 ADDL (13T)	109
722									43	25	#5	12-10	H	25-#5 ADDL (16T)	14389
723										25	#5	12-00		25-#5 ADDL (16T)	313
724															
725	BOTTOM BARS														
726									143	3	#5	14-00		3-#5 ADDL(1B)	6264
727									24	3	#5	14-10	H	3-#5 ADDL(1B)	1114
728									10	10	#5	12-00		10-#5 ADDL(3B)	1252
729	18" & 22" THICK PT SLAB														
730	AREA = 38870 SQ.FT														
731										1060	#4	40-00		#4 @24" EW (6B)	28323
732															
733	TOP & BOTTOM BARS														
734						32			2	1	#5	40-00		1-#5 T&B (1TB)	2670
735						82			2	1	#5	4-00	H	1-#5 COR T&B (1TB)	684
736									2	28	#6	11-02	H	#6 @12" T&B (4TB)	939
737									2	30	#6	11-00	H	#6 @12" T&B (4TB)	991
738									2	210	#6	10-00	H	#6 @12" T&B (4TB)	6308
739									2	15	#6	8-10	H	#6 @12" T&B (4TB)	398
740									2	15	#6	8-07	H	#6 @12" T&B (4TB)	387
741									2	65	#6	10-06	H	#6 @12" T&B (4TB)	2050
742									2	105	#6	11-10	H	#6 @12" T&B (4TB)	3732
743									2	36	#6	8-02	H	#6 @12" T&B (4TB)	883
744									2	17	#6	12-02	H	#6 @12" T&B (4TB)	621

Bid Date -

## \*\* ESTIMATING BAR LIST \*\*

LINE	LA	EP	A/D	STRUCTURE	MULT	REQ	CODE	+	X	QTY	SZ/GR	LENGTH	B	COMMENT	LINE LB
745									2	95	#6	8-00	H	#6 @12" T&B (4TB)	2283
746															
747	REF. SHEET(1/S400) (44-LOC.)														
748						44			2	2	#5	4-00		2-#5 DIGONAL T&B	734
749															
750	REF. SHEET(14/S404) (580 LFT)														
751									16	1	#5	40-00		1-#5 CONT	668
752									56	1	#5	6-00	H	1-#5 COR	350
753										130	#5	40-00		#5 @12" DWL TOP	5424
754															
755	CONCRETE CURB														
756	REF. SHEET(S104) (310 LFT)														
757										315	#5	4-08	H	#5 @12" D/V	1533
758									9	2	#5	40-00		#5 @12" HOR	751
759									26	2	#5	6-00	H	#5 @12" HOR COR	325
760															
761	DISTRIBUTED TENDON BOTH ENDS														
762	REF. SHEET(14/S403)														
763										972	#3	4-06	L	#3 HAIRPIN	1645
764									17	2	#4	40-00		2-#4 BACKUP BAR	908
765															
766	BANDED TENDON BOTH ENDS														
767	REF. SHEET(15/S403)														
768										670	#3	4-06	L	#3 HAIRPIN	1134
769									14	2	#4	40-00		2-#4 BACKUP BAR	748
770									14	2	#5	40-00		2-#5 BOT	1168
771															
772	TENDON SWEEP														
773	REF. SHEET(5/S404)														
774										1835	#3	4-06	L	#3 @12" HAIRPIN	3105
775															

Bid Date -

\*\* ESTIMATING BAR LIST \*\*

LINE	LA	EP	A/D	STRUCTURE	MULT	REQ	CODE	+	X	QTY	SZ/GR	LENGTH	B	COMMENT	LINE LB
776				>LEVEL-L3			LEVEL-L3 (S105)								
777	MILD REINFORCEMENT														
778	TOP BARS														
779									23	10	#5	12-00		10-#5 ADDL (1T)	2879
780									14	10	#5	12-10	H	10-#5 ADDL (1T)	1874
781									16	15	#5	12-00		15-#5 ADDL (2T)	3004
782									5	15	#5	12-10	H	15-#5 ADDL (2T)	1004
783									20	18	#5	12-00		18-#5 ADDL (3T)	4506
784									2	18	#5	12-10	H	18-#5 ADDL (3T)	482
785										10	#5	7-00		10-#5 ADDL (5T)	73
786									34	10	#5	7-10	H	10-#5 ADDL (5T)	2778
787										7	#5	16-00		7-#5 ADDL (6T)	117
788										260	#5	10-10	H	#5 @12" ADDL (10T)	2938
789									12	10	#5	15-10	H	10-#5 ADDL (12T)	1982
790									4	5	#5	20-00		5-#5 ADDL (13T)	417
791									65	25	#5	12-00		25-#5 ADDL (16T)	20338
792										25	#5	12-10	H	25-#5 ADDL (16T)	335
793															
794	BOTTOM BARS														
795									15	10	#5	12-00		10-#5 ADDL(3B)	1877
796	12" THICK PT SLAB														
797	AREA = 33210 SQ.FT														
798										907	#4	40-00		#4 @24" EW (6B)	24235
799															
800	TOP & BOTTOM BARS														
801						44			2	1	#5	40-00		1-#5 T&B (1TB)	3671
802						138			2	1	#5	4-00	H	1-#5 COR T&B (1TB)	1151
803									2	26	#6	11-00	H	#6 @12" T&B (4TB)	859
804									2	90	#6	10-00	H	#6 @12" T&B (4TB)	2704
805									2	12	#6	11-06	H	#6 @12" T&B (4TB)	415
806									2	12	#6	11-04	H	#6 @12" T&B (4TB)	409

Bid Date -

\*\* ESTIMATING BAR LIST \*\*

LINE	LA	EP	A/D	STRUCTURE	MULT	REQ	CODE	+	X	QTY	SZ/GR	LENGTH	B	COMMENT	LINE LB
807									2	15	#6	10-00	H	#6 @12" T&B (4TB)	451
808									2	14	#6	9-10	H	#6 @12" T&B (4TB)	414
809									2	13	#6	8-08	H	#6 @12" T&B (4TB)	338
810									2	15	#6	10-08	H	#6 @12" T&B (4TB)	481
811									2	16	#6	10-07	H	#6 @12" T&B (4TB)	509
812									2	19	#6	15-08	H	#6 @12" T&B (4TB)	894
813									2	88	#6	11-00	H	#6 @12" T&B (4TB)	2908
814									2	20	#6	11-06	H	#6 @12" T&B (4TB)	691
815									2	19	#6	13-00	H	#6 @12" T&B (4TB)	742
816									2	13	#6	11-06	H	#6 @12" T&B (4TB)	449
817									2	24	#6	9-00	H	#6 @12" T&B (4TB)	649
818									2	9	#6	8-00	H	#6 @12" T&B (4TB)	216
819															
820	DISTRIBUTED TENDON BOTH ENDS														
821	REF. SHEET(14/S403)														
822										820	#3	4-06	L	#3 HAIRPIN	1387
823									26	2	#4	40-00		2-#4 BACKUP BAR	1389
824															
825	BANDED TENDON BOTH ENDS														
826	REF. SHEET(15/S403)														
827										560	#3	4-06	L	#3 HAIRPIN	948
828									17	2	#4	40-00		2-#4 BACKUP BAR	908
829									17	2	#5	40-00		2-#5 BOT	1418
830															
831	TENDON SWEEP														
832	REF. SHEET(5/S404)														
833										4358	#3	4-06	L	#3 @12" HAIRPIN	7374
834															
835														>COUPLER BAR	COUPLER BAR
836	LEVEL-LL1 (S102)														
837	REF. SHEET(2/S400)														

Bid Date -

\*\* ESTIMATING BAR LIST \*\*

LINE	LA	EP	A/D	STRUCTURE	MULT	REQ	CODE	+	X	QTY	SZ/GR	LENGTH	B	COMMENT	LINE LB
838	22" THICK INFILL SLAB														
839									2	13	#6	7-00		#6 @12" COUPLER T&B	273
840									2	26	#6	8-10		#6 @12" COUPLER T&B	690
841									2	13	#6	15-10		#6 @12" COUPLER T&B	618
842															
843	LEVEL-L1 (S103)														
844	REF. SHEET(2/S400)														
845	22" THICK INFILL SLAB														
846									2	13	#6	7-00		#6 @12" COUPLER T&B	273
847									2	26	#6	8-10		#6 @12" COUPLER T&B	690
848									2	13	#6	15-10		#6 @12" COUPLER T&B	618
849															
850	LEVEL-2 (S104)														
851	REF. SHEET(2/S400)														
852	22" THICK INFILL SLAB														
853									2	13	#6	7-00		#6 @12" COUPLER T&B	273
854									2	26	#6	8-10		#6 @12" COUPLER T&B	690
855									2	13	#6	15-10		#6 @12" COUPLER T&B	618
856															
857	>THREADED BAR                      THREADED BAR														
858	LEVEL-LL1 (S102)														
859	REF. SHEET(2/S400)														
860	22" THICK INFILL SLAB														
861									2	52	#6	7-08		#6 @12" THREADED T&B	1198
862															
863	LEVEL-L1 (S103)														
864	REF. SHEET(2/S400)														
865	22" THICK INFILL SLAB														
866									2	52	#6	7-08		#6 @12" THREADED T&B	1198
867															
868	LEVEL-2 (S104)														



Bid Date -

\*\* ESTIMATING BAR LIST \*\*

LINE	LA	EP	A/D	STRUCTURE	MULT	REQ	CODE	+	X	QTY	SZ/GR	LENGTH	B	COMMENT	LINE LB
869 REF. SHEET(2/S400)															
870 22" THICK INFILL SLAB															
871									2	52	#6	7-08		#6 @12" THREADED T	B 1198
872															
873				POOL										POOL	
874				>DRILLED PIER										DRILLED PIER	
875 MARK = P1 (DIA =3'-0")															
876 REF. SHEET (9/S300 & S120)(H =78'-0")(9-LOC)															
877									9	6	#9	83-00		6-#9 VERT	15239
878									9	6	#9	9-00	H	6-#9 TOP DWL	1652
879									9	54	#4	11-06	L	#4 @18" TIES	3733
880									9	3	#4	11-06	L	3-#4 TIES @TOP	207
881															
882				>CONT.FTG										CONTINUES FOOTING	
883 REF. SHEET(1/S121)(44 -LFT)															
884									2	9	#5	40-00		#5 @12" CONT	751
885										46	#5	8-00		#5 @12" TRANS	384
886 REF. SHEET(2/S121)(371 -LFT)															
887									11	4	#5	40-00		#5 @12" CONT	1836
888										375	#5	3-00		#5 @12" TRANS	1173
889									16	3	#5	6-00	H	#5 @12" COR	300
890 CONCRETE WALL DWL															
891 REF. SHEET(1/S121)															
892									2	363	#5	5-06	H	#5 @12" DWL EF	4165
893															
894				>CONC.WALL										CONCRETE WALL	
895 REF. SHEET(1/S121)(196 -LFT)(H =VARIES)															
896									2	200	#5	28-04		#5 @12" VERT EF	11821
897						6			2	30	#5	40-00		#5 @12" HOR EF	15019
898						6			2	30	#5	6-00	H	#5 @12" COR EF	2253
899 REF. SHEET(2/S121)(103 -LFT)(H =VARIES)															

Bid Date -

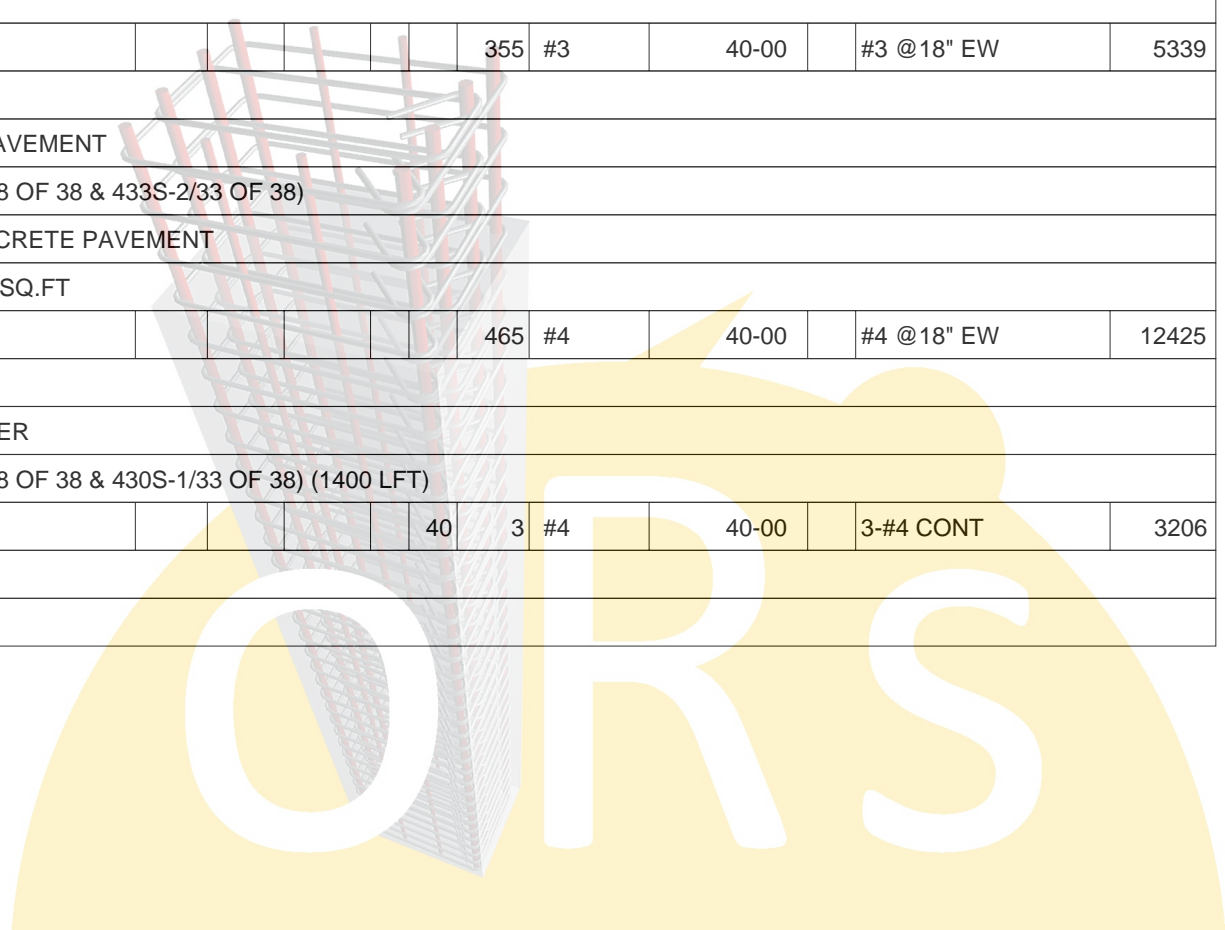
\*\* ESTIMATING BAR LIST \*\*

LINE	LA	EP	A/D	STRUCTURE	MULT	REQ	CODE	+	X	QTY	SZ/GR	LENGTH	B	COMMENT	LINE LB
900									2	105	#5	24-08		#5 @12" VERT EF	5403
901						6			2	26	#5	40-00		#5 @12" HOR EF	13017
902						6			2	26	#5	6-00	H	#5 @12" COR EF	1952
903 REF. SHEET(2/S121)(55 -LFT)(H =VARIES)															
904									2	58	#5	22-08		#5 @12" VERT EF	2742
905						2			2	24	#5	40-00		#5 @12" HOR EF	4005
906						8			2	24	#5	6-00	H	#5 @12" COR EF	2403
907															
				>SOG		SLAB ON GRADE									
909 REF. SHEET(1/S120)(2500 SQ.FT)															
910										92	#4	40-00		#4 @18" EW	2458
911															
				>UPPER LEVEL		UPPER LEVEL									
913 LEVEL-1 (S120)															
914 16" THICK SLAB															
915 AREA = 2115 SQ.FT															
916									2	124	#6	40-00		#6 @12" EW T&B (6TB)	14900
917										135	#4	6-04	L	#4 @48" STANDEE	571
918									9	2	#5	4-00		2-#5 DIGONAL T&B	75
919															
920 LEVEL-2 (S120)															
921 14" THICK SLAB															
922 AREA = 2555 SQ.FT															
923									2	148	#6	40-00		#6 @12" EW T&B (6TB)	17784
924										160	#4	6-00	L	#4 @48" STANDEE	641
925									8	2	#5	4-00		2-#5 DIGONAL T&B	67
926									2	155	#6	8-06	H	#6 @12" T&B (4TB)	3958
927															
				SITWORK		SITWORK									
929 CONCRETE SIDEWALK															
930 REF. SHEET(08 OF 38 & 432S-1/33 OF 38)															

Bid Date -

\*\* ESTIMATING BAR LIST \*\*

LINE	LA	EP	A/D	STRUCTURE	MULT	REQ	CODE	+	X	QTY	SZ/GR	LENGTH	B	COMMENT	LINE LB
931				4" THICK SIDEWALK											
932				MESH TYPE = 6"x6"xW1.4xW1.4 WWF											
933				SHEET SIZE = 20'-0"x8'-0"											
934				AREA = 9925 SQ.FT											
935				NO OF SHEETS = 73 NO'S											
936				(OR)											
937										355	#3	40-00		#3 @18" EW	5339
938															
939				CONCRETE PAVEMENT											
940				REF. SHEET(08 OF 38 & 433S-2/33 OF 38)											
941				7" THICK CONCRETE PAVEMENT											
942				AREA = 12750 SQ.FT											
943										465	#4	40-00		#4 @18" EW	12425
944															
945				CURB & GUTTER											
946				REF. SHEET(08 OF 38 & 430S-1/33 OF 38) (1400 LFT)											
947										40	3 #4	40-00		3-#4 CONT	3206
948															
949															



Bid Date -

**\*\* TOTALS PAGE (LBS) \*\***

DRILLED PIER	STRUCTURE TOTAL		----- STRAIGHT -----		LIGHT BENT -----		HEAVY BENT -----		STOCK/MILL -----	
SIZE	%	Weight	%	Weight	%	Weight	%	Weight	%	Weight
#4 Gr 60	100	50,036			100	50,036				
#8 Gr 60	100	22,152	100	22,152						
#9 Gr 60	100	192,964	100	192,964						
Average Lbs per Linear Feet = 1.8946					Average Rebar Size = 7.97					
Total 132.6 Tons	100	265,152	81	215,116	19	50,036				

CONC. COLUMN	STRUCTURE TOTAL		----- STRAIGHT -----		LIGHT BENT -----		HEAVY BENT -----		STOCK/MILL -----	
SIZE	%	Weight	%	Weight	%	Weight	%	Weight	%	Weight
#3 Gr 60	100	14,721			100	14,721				
#8 Gr 60	100	123,535					100	123,535		
Average Lbs per Linear Feet = 1.6186					Average Rebar Size = 7.47					
Total 69.2 Tons	100	138,256			11	14,721	89	123,535		

MAT FOOTING	STRUCTURE TOTAL		----- STRAIGHT -----		LIGHT BENT -----		HEAVY BENT -----		STOCK/MILL -----	
SIZE	%	Weight	%	Weight	%	Weight	%	Weight	%	Weight
#4 Gr 60	100	614			100	614				
#5 Gr 60	100	2,008					100	2,008		
#6 Gr 60	100	3,821					100	3,821		
#7 Gr 60	100	17,824	100	17,824						
Average Lbs per Linear Feet = 1.7200					Average Rebar Size = 6.60					
Total 12.2 Tons	100	24,267	73	17,824	3	614	24	5,829		

Bid Date -

**\*\* TOTALS PAGE (LBS) \*\***

GRADE BEAM	STRUCTURE TOTAL		STRAIGHT		LIGHT BENT		HEAVY BENT		STOCK/MILL	
SIZE	%	Weight	%	Weight	%	Weight	%	Weight	%	Weight
#4 Gr 60	100	1,818			100	1,818				
#5 Gr 60	100	2,036					100	2,036		
#6 Gr 60	100	21,539					100	21,539		
#7 Gr 60	100	47,185	77	36,180			23	11,005		
Average Lbs per Linear Feet = 1.7240					Average Rebar Size = 6.57					
Total 36.3 Tons	100	72,578	50	36,180	3	1,818	48	34,580		

CONC. WALL	STRUCTURE TOTAL		STRAIGHT		LIGHT BENT		HEAVY BENT		STOCK/MILL	
SIZE	%	Weight	%	Weight	%	Weight	%	Weight	%	Weight
#4 Gr 60	100	4,565	15	663	6	267	12	561	67	3,074
#5 Gr 60	100	29,635	71	20,962			17	4,918	13	3,755
#6 Gr 60	100	331,390	90	296,661			10	34,729		
#10 Gr 60	100	1,334					100	1,334		
Average Lbs per Linear Feet = 1.4322					Average Rebar Size = 5.91					
Total 183.5 Tons	100	366,924	87	318,286		267	11	41,542	2	6,829

SOG	STRUCTURE TOTAL		STRAIGHT		LIGHT BENT		HEAVY BENT		STOCK/MILL	
SIZE	%	Weight	%	Weight	%	Weight	%	Weight	%	Weight
#3 Gr 60	100	782			100	782				
#4 Gr 60	100	36,381			2	843			98	35,538
#5 Gr 60	100	4,133	72	2,963			28	1,170		
Average Lbs per Linear Feet = .6825					Average Rebar Size = 4.08					
Total 20.7 Tons	100	41,296	7	2,963	4	1,625	3	1,170	86	35,538



Bid Date -

**\*\* TOTALS PAGE (LBS) \*\***

UPPER LEVEL	STRUCTURE TOTAL	STRAIGHT		LIGHT BENT		HEAVY BENT		STOCK/MILL		
SIZE	%	Weight	%	Weight	%	Weight	%	Weight	%	Weight
#3 Gr 60	100	15,593			100	15,593				
#4 Gr 60	100	59,718			4	2,272			96	57,446
#5 Gr 60	100	448,351	87	389,694			12	55,613	1	3,044
#6 Gr 60	100	40,058	21	8,337			79	31,721		
		Average Lbs per Linear Feet = .9597				Average Rebar Size = 4.91				
Total 281.9 Tons	100	563,720	71	398,031	3	17,865	15	87,334	11	60,490

UPPER LEVEL	SubStructure	STRAIGHT		LIGHT BENT		HEAVY BENT		STOCK/MILL		
>LEVEL-LL1	%	Weight	%	Weight	%	Weight	%	Weight	%	Weight
#4 Gr 60	100	1,136			100	1,136				
#5 Gr 60	100	166,877	94	157,556			5	8,195	1	1,126
		Average Lbs per Linear Feet = 1.0391				Average Rebar Size = 4.99				
Total 84.1 Tons	100	168,013	94	157,556	1	1,136	5	8,195	1	1,126

UPPER LEVEL	SubStructure	STRAIGHT		LIGHT BENT		HEAVY BENT		STOCK/MILL		
>LEVEL-L1	%	Weight	%	Weight	%	Weight	%	Weight	%	Weight
#4 Gr 60	100	2,071			55	1,136			45	935
#5 Gr 60	100	161,254	94	151,684			5	8,444	1	1,126
		Average Lbs per Linear Feet = 1.0356				Average Rebar Size = 4.99				
Total 81.7 Tons	100	163,325	93	151,684	1	1,136	5	8,444	1	2,061

Bid Date -

**\*\* TOTALS PAGE (LBS) \*\***

UPPER LEVEL  
>LEVEL-L2

SIZE	SubStructure	STRAIGHT	LIGHT BENT	HEAVY BENT	STOCK/MILL					
SIZE	%	Weight	%	Weight	%	Weight	%	Weight		
#3 Gr 60	100	5,884		100	5,884					
#4 Gr 60	100	29,979					100	29,979		
#5 Gr 60	100	69,376	61	42,571			38	26,430		
#6 Gr 60	100	18,592					100	18,592		
		Average Lbs per Linear Feet = .8882				Average Rebar Size = 4.81				
Total 62.0 Tons	100	123,831	34	42,571	5	5,884	36	45,022	25	30,354

UPPER LEVEL  
>LEVEL-L3

SIZE	SubStructure	STRAIGHT	LIGHT BENT	HEAVY BENT	STOCK/MILL					
SIZE	%	Weight	%	Weight	%	Weight	%	Weight		
#3 Gr 60	100	9,709		100	9,709					
#4 Gr 60	100	26,532					100	26,532		
#5 Gr 60	100	50,844	75	37,883			25	12,544		
#6 Gr 60	100	13,129					100	13,129		
		Average Lbs per Linear Feet = .8146				Average Rebar Size = 4.67				
Total 50.2 Tons	100	100,214	38	37,883	10	9,709	26	25,673	27	26,949

UPPER LEVEL  
>COUPLER BAR

SIZE	SubStructure	STRAIGHT	LIGHT BENT	HEAVY BENT	STOCK/MILL				
SIZE	%	Weight	%	Weight	%	Weight	%	Weight	
#6 Gr 60	100	4,743	100	4,743					
		Average Lbs per Linear Feet = 1.5020				Average Rebar Size = 6.00			
Total 2.4 Tons	100	4,743	100	4,743					

Bid Date -

**\*\* TOTALS PAGE (LBS) \*\***

UPPER LEVEL  
 >THREADED BAR ---- SubStructure ---- ----- STRAIGHT ----- LIGHT BENT ----- HEAVY BENT ----- STOCK/MILL -----

SIZE	%	Weight	%	Weight	%	Weight	%	Weight	%	Weight
#6 Gr 60	100	3,594	100	3,594						
Average Lbs per Linear Feet = 1.5020					Average Rebar Size = 6.00					
Total 1.8 Tons	100	3,594	100	3,594						

POOL  
 STRUCTURE TOTAL ----- STRAIGHT ----- LIGHT BENT ----- HEAVY BENT ----- STOCK/MILL -----

SIZE	%	Weight	%	Weight	%	Weight	%	Weight	%	Weight
#4 Gr 60	100	7,610			68	5,152			32	2,458
#5 Gr 60	100	67,366	84	56,293			16	11,073		
#6 Gr 60	100	36,642	89	32,684			11	3,958		
#9 Gr 60	100	16,891	90	15,239			10	1,652		
Average Lbs per Linear Feet = 1.2199					Average Rebar Size = 5.75					
Total 64.3 Tons	100	128,509	81	104,216	4	5,152	13	16,683	2	2,458

POOL  
 >DRILLED PIER ---- SubStructure ---- ----- STRAIGHT ----- LIGHT BENT ----- HEAVY BENT ----- STOCK/MILL -----

SIZE	%	Weight	%	Weight	%	Weight	%	Weight	%	Weight
#4 Gr 60	100	3,940			100	3,940				
#9 Gr 60	100	16,891	90	15,239			10	1,652		
Average Lbs per Linear Feet = 1.9171					Average Rebar Size = 8.05					
Total 10.5 Tons	100	20,831	73	15,239	19	3,940	8	1,652		

Bid Date -

\*\* TOTALS PAGE (LBS) \*\*

POOL >CONT.FTG	---- SubStructure ----		----- STRAIGHT -----		----- LIGHT BENT -----		----- HEAVY BENT -----		----- STOCK/MILL -----	
SIZE	%	Weight	%	Weight	%	Weight	%	Weight	%	Weight
#5 Gr 60	100	8,609	48	4,144			52	4,465		
Average Lbs per Linear Feet = 1.0430						Average Rebar Size = 5.00				
Total 4.4 Tons	100	8,609	48	4,144			52	4,465		

POOL >CONC.WALL	---- SubStructure ----		----- STRAIGHT -----		----- LIGHT BENT -----		----- HEAVY BENT -----		----- STOCK/MILL -----	
SIZE	%	Weight	%	Weight	%	Weight	%	Weight	%	Weight
#5 Gr 60	100	58,615	89	52,007			11	6,608		
Average Lbs per Linear Feet = 1.0430						Average Rebar Size = 5.00				
Total 29.4 Tons	100	58,615	89	52,007			11	6,608		

POOL >SOG	---- SubStructure ----		----- STRAIGHT -----		----- LIGHT BENT -----		----- HEAVY BENT -----		----- STOCK/MILL -----	
SIZE	%	Weight	%	Weight	%	Weight	%	Weight	%	Weight
#4 Gr 60	100	2,458							100	2,458
Average Lbs per Linear Feet = .6680						Average Rebar Size = 4.00				
Total 1.3 Tons	100	2,458							100	2,458

POOL >UPPER LEVEL	---- SubStructure ----		----- STRAIGHT -----		----- LIGHT BENT -----		----- HEAVY BENT -----		----- STOCK/MILL -----	
SIZE	%	Weight	%	Weight	%	Weight	%	Weight	%	Weight
#4 Gr 60	100	1,212			100	1,212				
#5 Gr 60	100	142	100	142						
#6 Gr 60	100	36,642	89	32,684			11	3,958		
Average Lbs per Linear Feet = 1.4422						Average Rebar Size = 5.93				
Total 19.0 Tons	100	37,996	86	32,826	3	1,212	10	3,958		

Bid Date -

**\*\* TOTALS PAGE (LBS) \*\***

SITework	STRUCTURE TOTAL		STRAIGHT		LIGHT BENT		HEAVY BENT		STOCK/MILL	
SIZE	%	Weight	%	Weight	%	Weight	%	Weight	%	Weight
#3 Gr 60	100	5,339							100	5,339
#4 Gr 60	100	15,631							100	15,631
Average Lbs per Linear Feet = .5577					Average Rebar Size = 3.75					
Total 10.5 Tons	100	20,970							100	20,970

GRAND TOTALS	TOTAL		STRAIGHT		LIGHT BENT		HEAVY BENT		STOCK/MILL	
SIZE	%	Weight	%	Weight	%	Weight	%	Weight	%	Weight
#3 Gr 60	100	36,435			85	31,096			15	5,339
#4 Gr 60	100	176,373		663	35	61,002		561	65	114,147
#5 Gr 60	100	553,529	85	469,912			14	76,818	1	6,799
#6 Gr 60	100	433,450	78	337,682			22	95,768		
#7 Gr 60	100	65,009	83	54,004			17	11,005		
#8 Gr 60	100	145,687	15	22,152			85	123,535		
#9 Gr 60	100	209,855	99	208,203			1	1,652		
#10 Gr 60	100	1,334					100	1,334		
Average Lbs per Linear Feet = 1.2206					Average Rebar Size = 5.99					
Total 810.9 Tons	100	1,621,672	67	1,092,616	6	92,098	19	310,673	8	126,285

